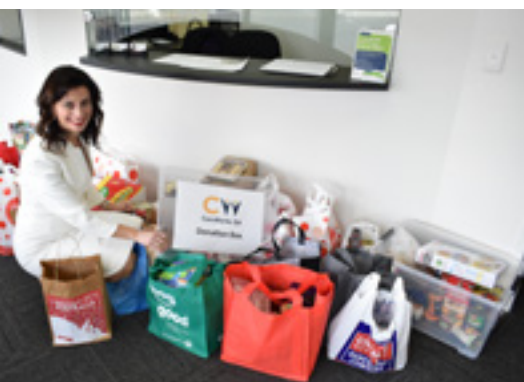


# Andrea Michaels MP

## MEMBER FOR ENFIELD

Newsletter | Spring 2019



### Andrea's Community Update

Spring has finally arrived and the sun is shining. This is my favourite time of the year!

Since I last wrote to you, I had my official office opening in late August. Thank you to Peter Malinauskas for helping me cut the ribbon, and to my fellow Parliamentary colleagues, to Mayor David O'Loughlin, Mayor Claire Boan and fellow councillors, and to the many special people from our local community groups for coming along. I really appreciate your support in helping me settle into this new role. Thank you also for your kind donations to CareWorks and Catherine House. They were greatly appreciated.

I have also recently set up my new website up at [www.andreamichaels.com.au](http://www.andreamichaels.com.au) so check it out!

I've continued getting out and about at street corner meetings and shopping centre visits. It's been great to be able to meet as many of you as I can and get to know you better. If you ever have anything you want to chat about, please feel free to make a time to come into the office for a cup of coffee.

I've been doing a lot of work trying to keep our Prospect Service SA open. There's an update on page 2. The State Budget caused some concern including the bin tax and land tax changes. I have had successes in getting a bus shelter replaced on Churchill Road, a year and a half after it was damaged in a motor vehicle accident and stopping the removal of Bus Stop 16 on Main North Road. I realise how important these 'small' wins are to our local community, as well as looking at big picture issues.

Again, thank you for your ongoing support.



#### What's Inside

- Prospect Road Discovery Trail
- Service SA Update
- State Budget Report
- Lightsview Public Transport
- Out and About



## Prospect Road Discovery Trail

Come and celebrate the vibrant and multicultural shopping district on Prospect Road in Kilburn and Blair Athol.

Saturday 2 November  
10 am to 3pm



A number of local shops and services have come together to celebrate the local business community. There will be stalls in front of shops on Prospect Road and a jumping castle, face painter and giveaways. The Khurashan IGA car park will be turned into a 'Community Zone' for community groups, sports clubs, schools and services based in Kilburn and Blair Athol to promote their activities.

Start at my office to collect your discovery trail map and shopping bag!



## Prospect Service SA Update

Following sustained pressure from the community, the Marshall Liberal Government have announced they will hold off closing the Prospect Service SA Centre for 2 years.

Whilst this is some good news for the thousands of South Australians who rely on it, the Marshall Liberal Government still plans to close and/or privatise our Service SA.

Thousands of people have helped to achieve this delay but now an even bigger fight looms to stop the Marshall Liberal Government from fully privatising all Service SA Centres.

Meanwhile, Steven Marshall has announced the privatisation of our trains and trams.

Prior to the last State Election, Steven Marshall said that the Liberals "don't have a privatisation agenda". The announcement to privatise our train and tram services is a blatant broken promise by Steven Marshall.

The Labor Party is opposed to privatising this essential public service and believes that public transport is for people, not profit.

Join the fight at  
[www.stopliberalcuts.com](http://www.stopliberalcuts.com)

# STOP LIBERALS

# CLOSING

service sa



# State Budget Report

This year's State Budget flew in the face of the Government's promises during the 2018 State Election of Lower Costs, Better Services and More Jobs.

Before the Budget was even handed down, we found out the Government was increasing fees and charges for a range of government services hitting the hip pockets of South Australians and small business owners.

No one escaped the dramatic hikes in fees, charges and taxes – council rate payers, motorists, public transport commuters, hospital patients, small businesses, property owners, tradies, regional communities, mining companies – the list goes on.

Among the hikes in everyday expenses include increases in:

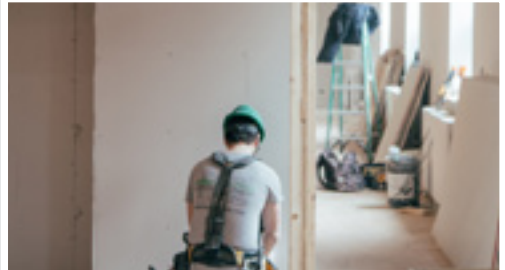
- motor vehicle transaction fees of up to 42 per cent
- tradie expenses of up to 10 per cent
- motor registration increases of 5 per cent
- public transport fare increases of 2 per cent
- driver's licence renewals up 4.5 per cent

## IMPORTANT INFORMATION FOR TRADIES



**Cost of being a tradie is going up under the Liberals**

Contractor licence	↑ UP 10%
Plumbing, gas fitting and electrical registration fee	↑ UP 10%
Registering a light commercial vehicle	↑ UP 5.1%
Registering a trailer	↑ UP 5.3%
Driver's Licence	↑ UP 4.5%



## Lightsview Public Transport

When I speak with residents of Lightsview, a regular topic of interest is the lack of public transport in the suburb. The new development was marketed as a cosmopolitan suburb close to the CBD with easy access to public transport. However, the promises made do not meet with the expectations of many of the residents. I recently wrote to all residents in Lightsview and asked them to complete a survey about their public transport experiences.

I received an overwhelming response to the survey and the message was loud and clear about the inadequacy of the infrequent bus services. I will be taking the results of my survey to the Transport Minister and will demand that improvements are made from Lightsview to the City and the Klemzig O-Bahn interchange.

I look forward to bring you better news in relation to bus services in future editions of my newsletter.

# Out and About Committed to our Community



Peter McKay Reserve Kilburn  
Community Safety Street Corner  
Meeting



Wiltja College  
with Principal Anthony Bennett and  
Hon Susan Close MP



Ukrainian Society  
Parliament House Tour



Prospect Broadview Bowling Club  
Committee



Enfield Primary School  
Parliament House Tour



Kilburn Football and Cricket Club  
Fundraising Day



Northfield Primary School  
Science Expo



St Gabriel's School Enfield



Bartonvale Retirement Village  
Neighbour Day Lunch

## Need a Justice of the Peace?

Justice of the Peace in attendance at my office  
Monday to Friday - 9 am to 5 pm

☎ 08 8260 7733 ✉ [enfield@parliament.sa.gov.au](mailto:enfield@parliament.sa.gov.au)

📍 6/430 Prospect Road, Kilburn SA 5084 📱 /AndreaMichaelsMP

Andrea Michaels  
Member for Enfield

Authorised by A. Michaels, 6/430 Prospect Rd, Kilburn SA 5084.  
Printed by Replica Press, 4a Visor Court, Holden Hill SA 5088.